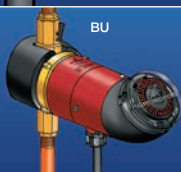


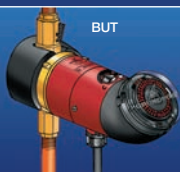
B



BT



BU



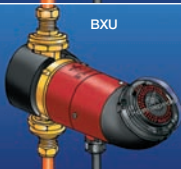
BUT



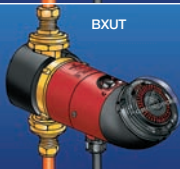
BX



BXT



BXU

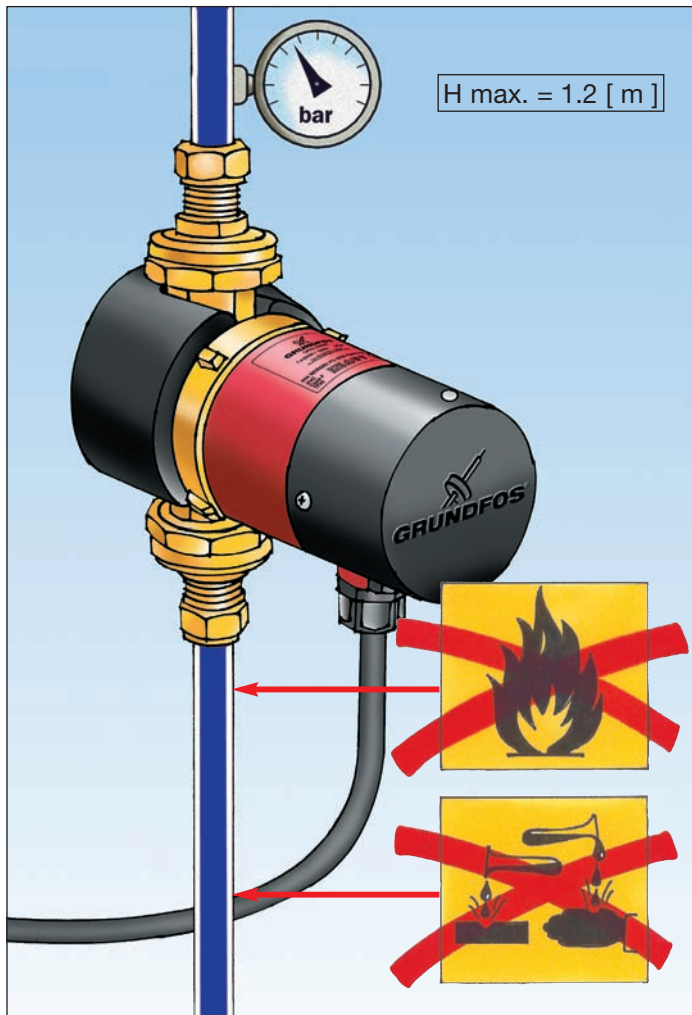


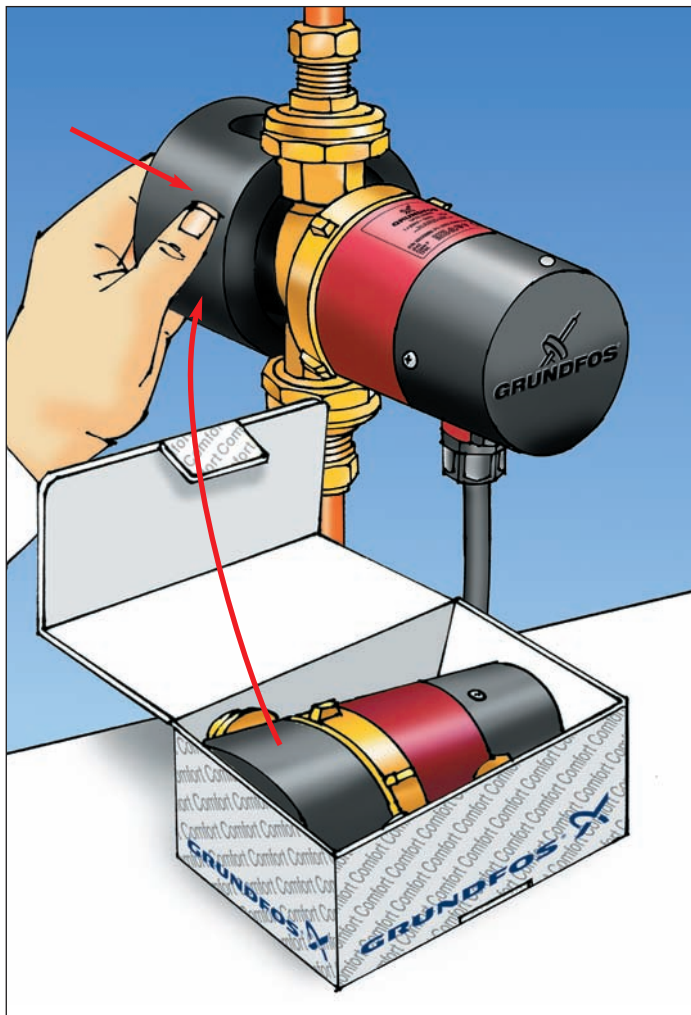
BXUT

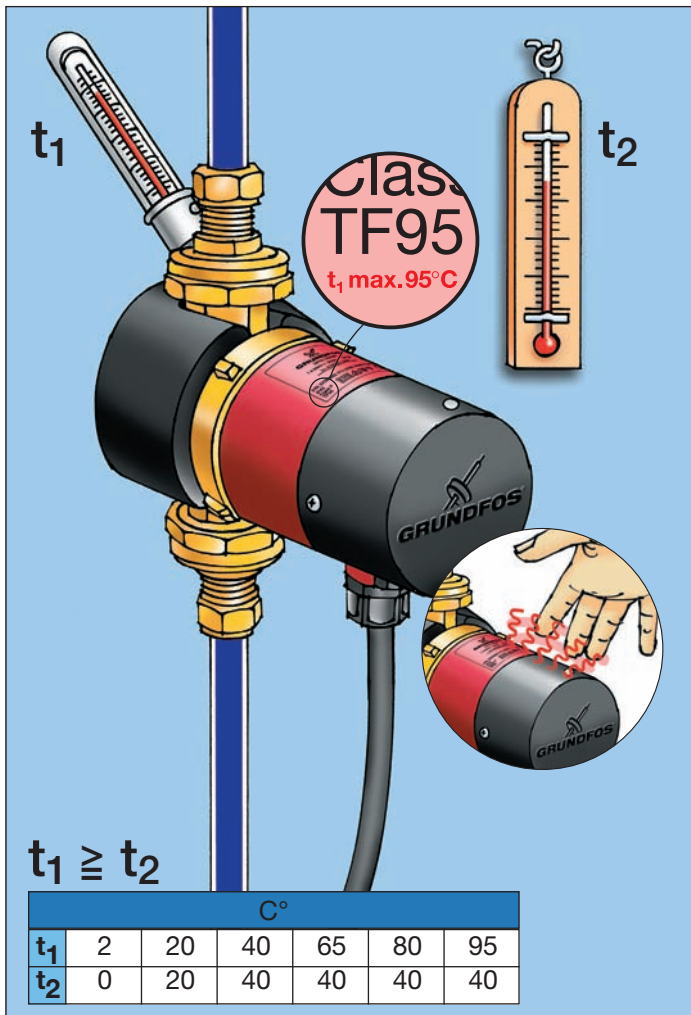
Grundfos Comfort

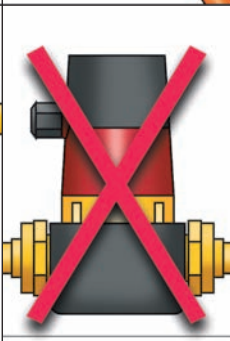
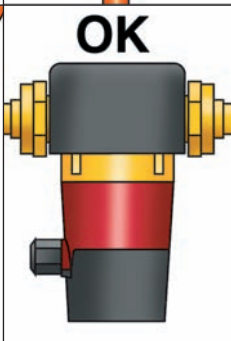
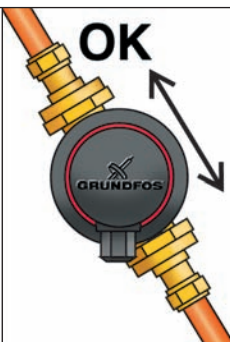
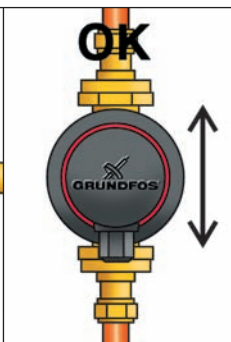
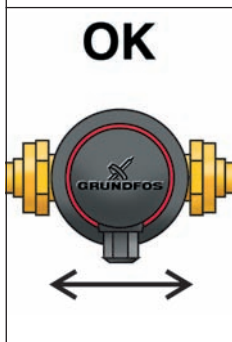
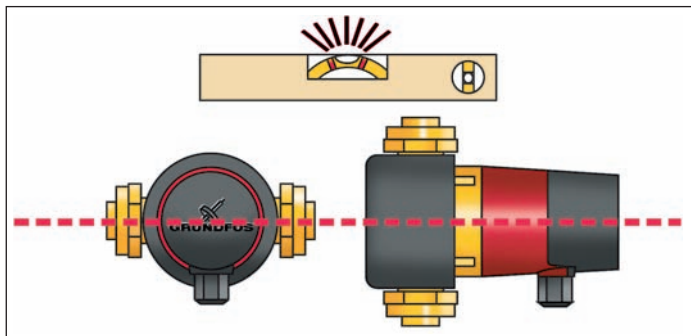
GB	Grundfos declares that these products are in conformity with the following EU directives:	Grundfos izjavlja, da so ti izdelki v skladu z naslednjimi smernicami EU:	SI
D	Konformitätserklärung. Grundfos erklärt, daß diese Produkte mit den folgenden EU-Richtlinien übereinstimmen:	Grundfos izjavlja da su ovi proizvodi sukladni slijedećim smjernicama EU:	HR
F	Grundfos déclare que ces produits sont en conformité avec les directives de l'Union Européenne suivantes:	Grundfos izjavlja da su ovi proizvodi u saglasnosti sa sledećim smernicama EU:	YU
I	Grundfos dichiara che questi prodotti sono conformi alle seguenti Direttive della Comunità Europea:	Societatea Grundfos declară că aceste produse sunt în conformitate cu următoarele directive ale Uniunii Europene:	RO
E	Grundfos declara que estos productos son conformes con las siguientes Directivas Europeas:	Грундфос потврђува че тези продукти соотвeтстват на следващите директиви на EC:	BG
P	A Grundfos declara que estes produtos estão em conformidade com as seguintes directivas UE:	Firma Grundfos prohlašuje, že výrobky jsou v souladu s následujícími směrnicemi EU:	CZ
GR	Η Grundfos δηλώνει ότι τα προϊόντα αυτά συμμορφώνονται προς τις ακόλουθες οδηγίες της Ε.Ε.:	Firma Grundfos prehlasuje, že výrobky sú v súlade s nasledovnými smernicami EU:	SK
NL	Grundfos verklaart, dat deze producten in overeenstemming zijn met de volgende richtlijnen:	Grundfos bu ürünlerin Avrupa Birliği'nin aşağıdaki Direktiflerine uygunluğunu onaylar:	TR
S	Grundfos försäkrar att dessa produkter är i överensstämmelse med följande EU-direktiv:	Grundfos kinnitab, et antud tooted vastavad järgmistele EU normidele:	EE
SF	Grundfos vakuuttaa, että nämä tuotteet täyttävät seuraavien EU direktiivien vaatimukset:	Firma Grundfos paziņo, ka izstrādājumi atbilst sekojošām ES normām:	LV
DK	Grundfos erklærer, at disse produkter er i overensstemmelse med følgende EU direktiver:	Grundfos patvirtina, kad šie produktai atitinka žemiau išvardintas ES normas:	LT
PL	Firma Grundfos oświadcza, że dane wyroby są zgodne z niniejszymi wytycznymi UE:	98/37/EEC (EN 292) 89/336/EEC (EN 50 081-1, EN 50 082-2) 73/23/EEC (EN 60 335-1, EN 60 335-2-51)	
RU	Фирма Grundfos заявляет, что данные изделия отвечают следующим нормам EC:	Bjerringbro, 1st November 2000 	
H	Mi, a Grundfos kijelentjük, hogy ezen termékek megfelelnek az Európai Unió következő irányelveinek:	Svend Aage Kaae Technical Manager	

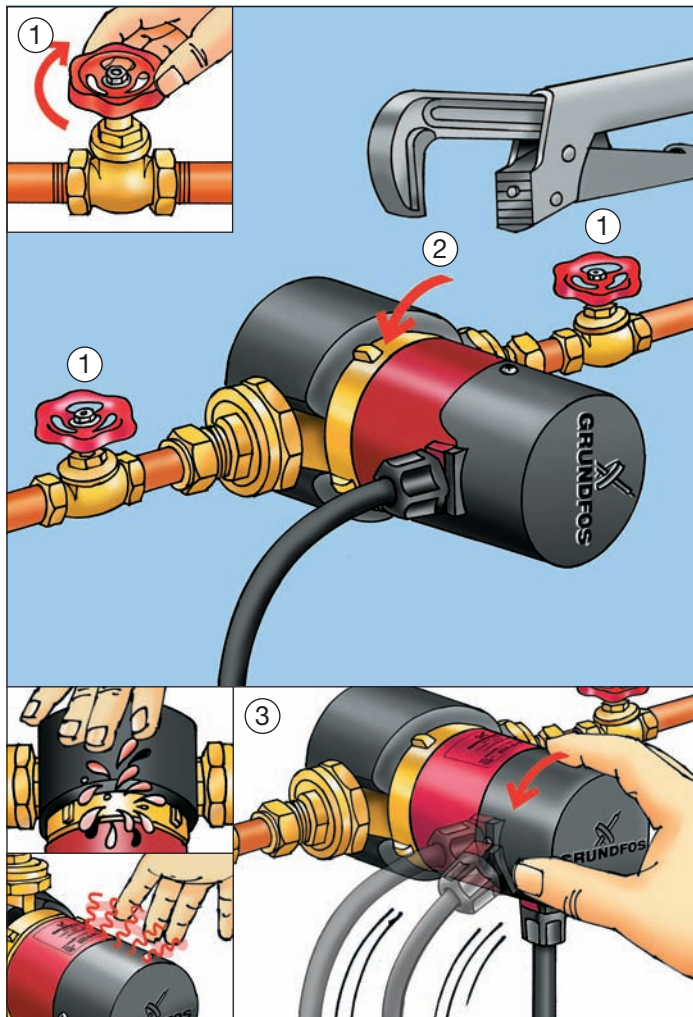
H max. = 1.2 [m]

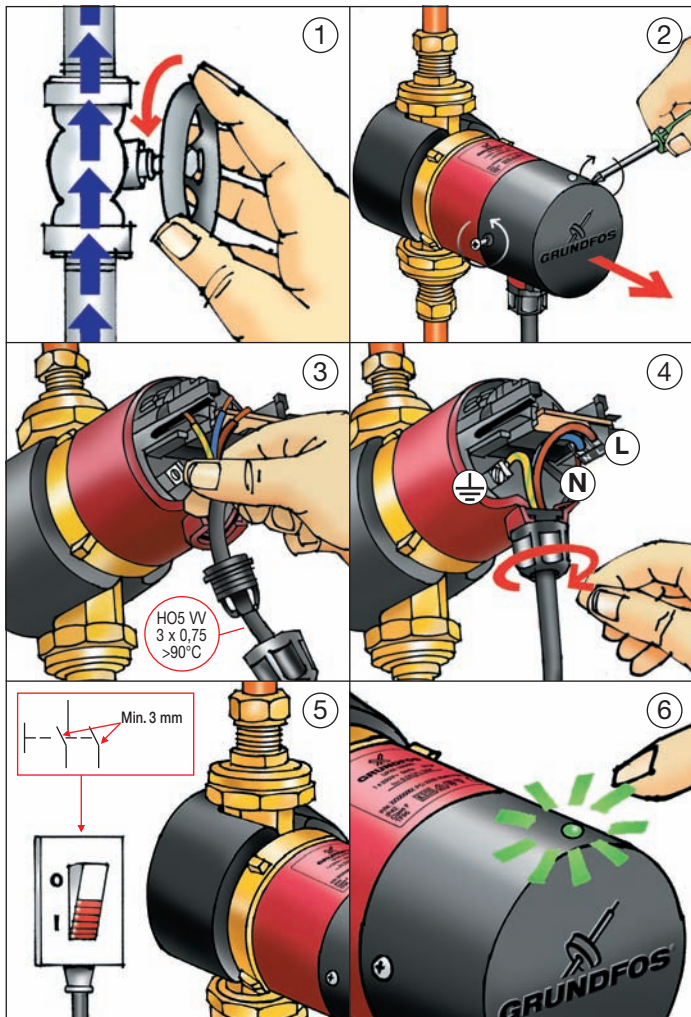


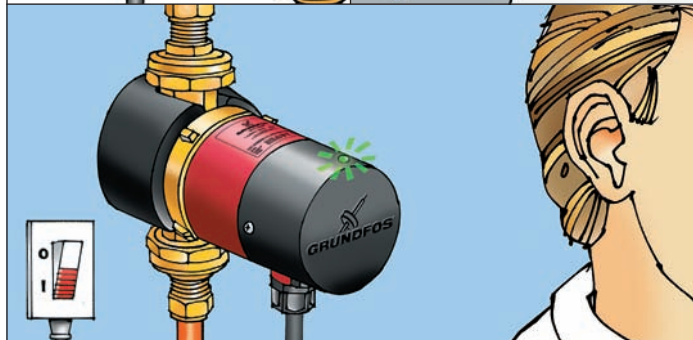




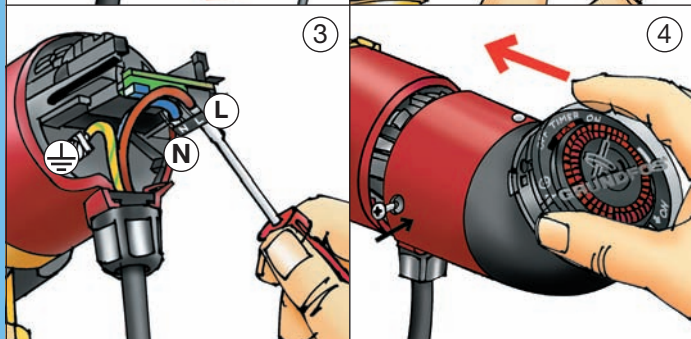
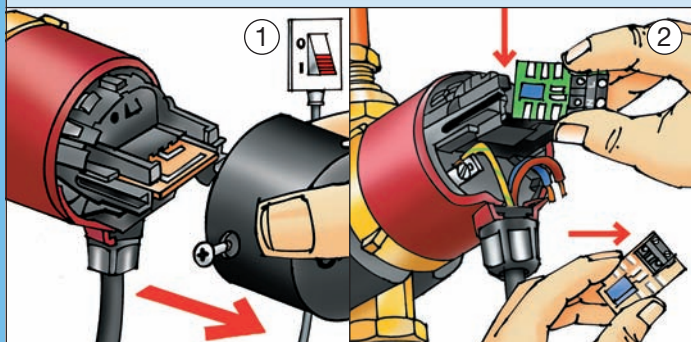
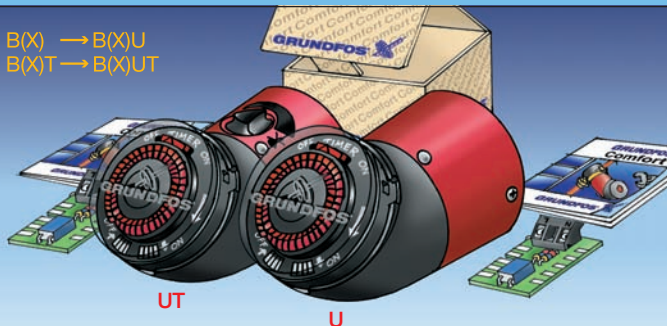


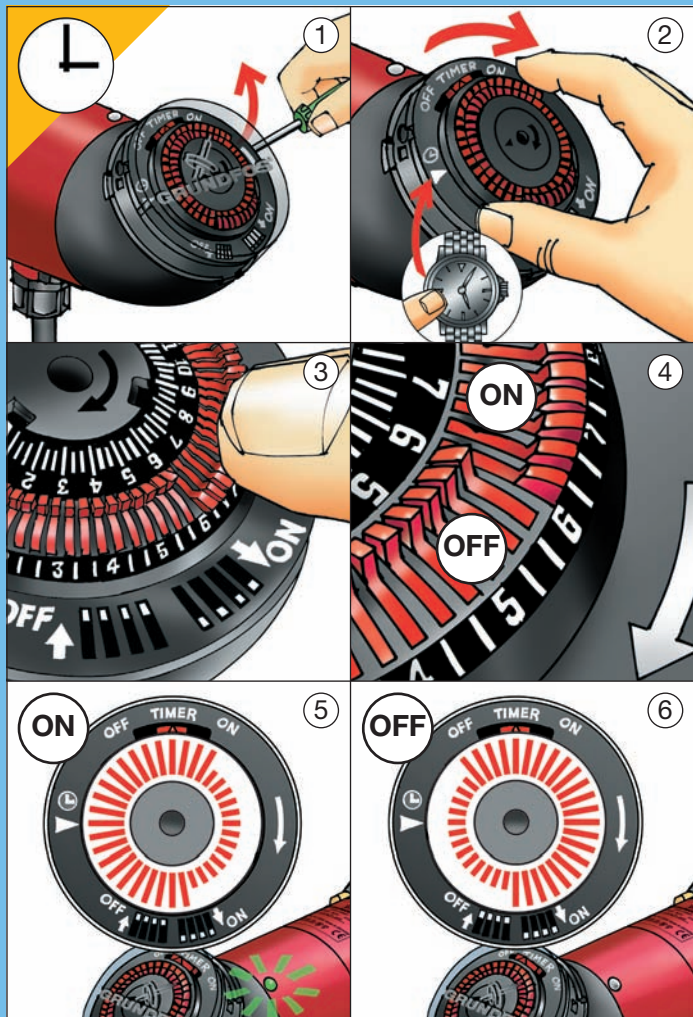


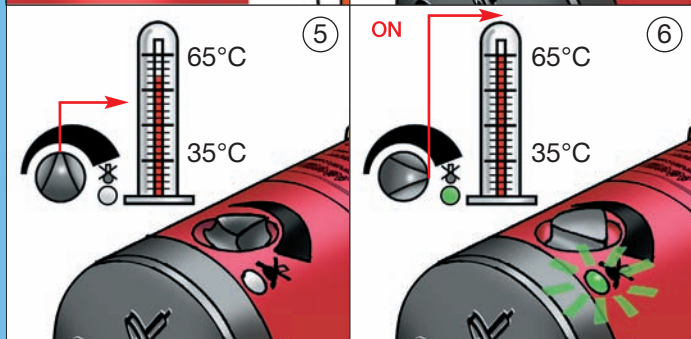
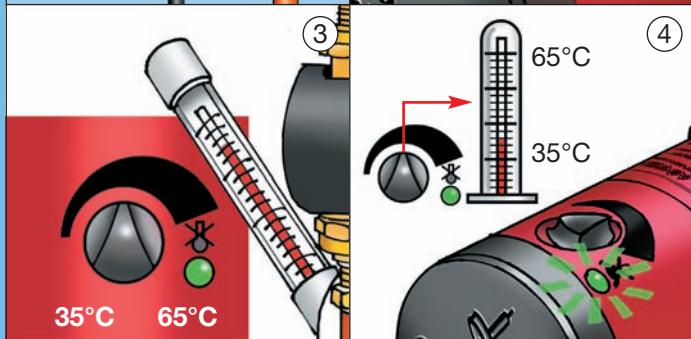
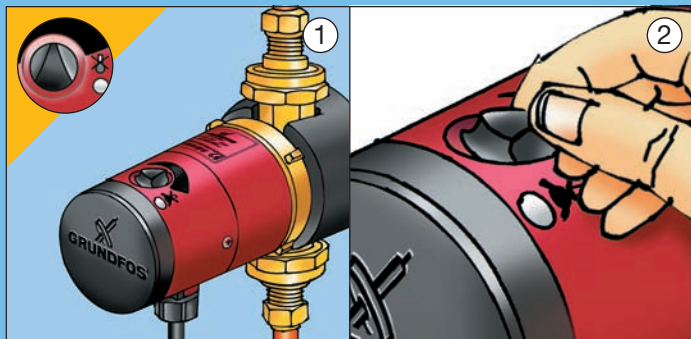


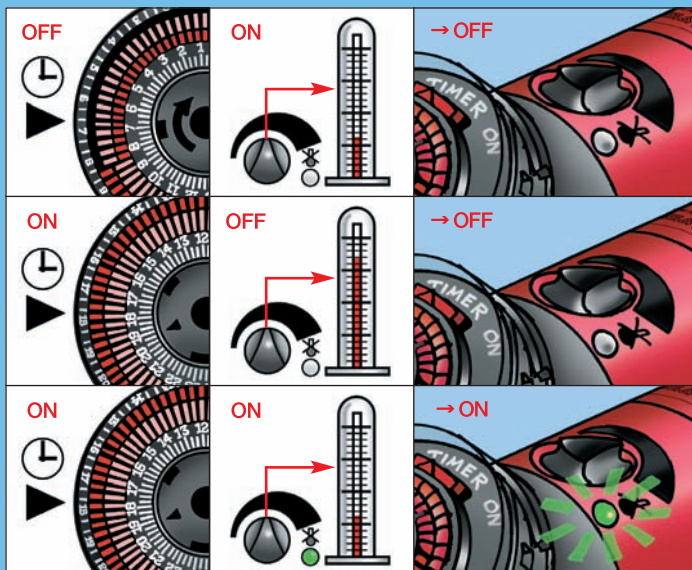
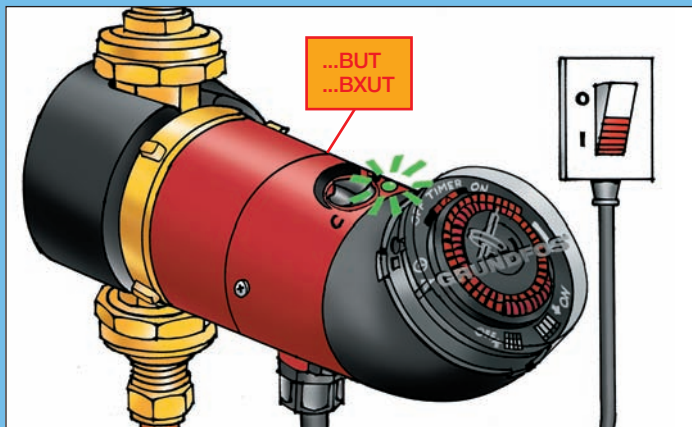


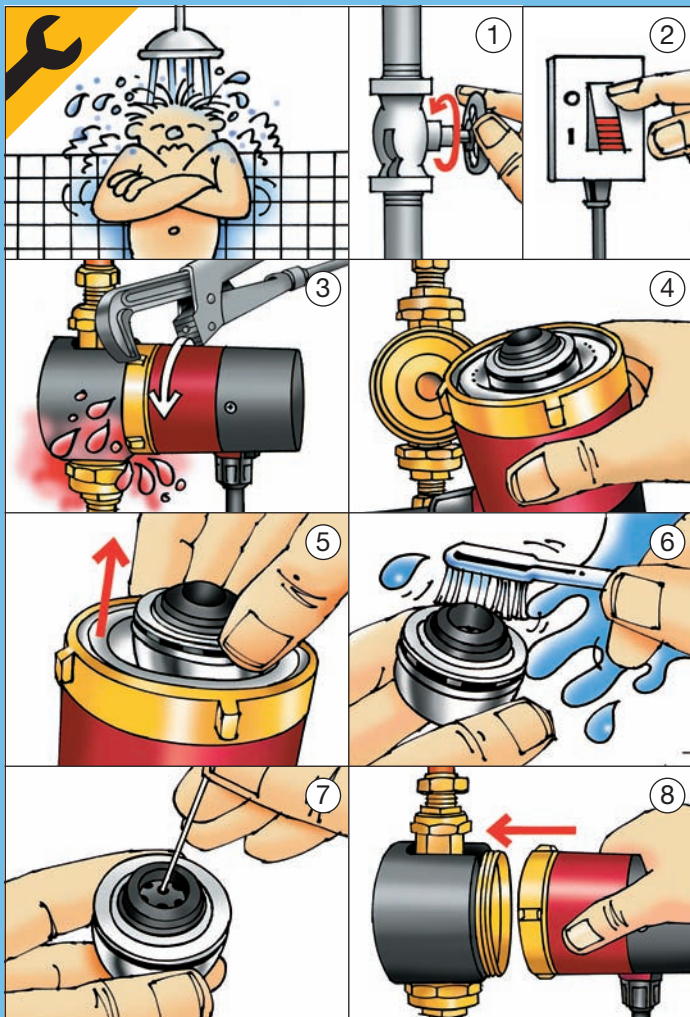
B(X) → B(X)U
B(X)T → B(X)UT













Poziom ciśnienia akustycznego
Poziom ciśnienia akustycznego pompy nie przekracza 43 dB(A).

PL

Уровень шума
Уровень шума насоса не превышает 43 дБ(А).

RU

Zajszint
A szivattyú zajszintje alacsonyabb, mint 43 dB(A).

H

Nivo hrupnosti
Nivo hrupnosti leži pod 43 dB(A).

SI

GB **Sound pressure level**
The sound pressure level of the pump is lower than 43 dB(A).

D **Schalldruckpegel**
Der Schalldruckpegel der Pumpe liegt unter 43 dB(A).

Razina zvučnog tlaka
Razina zvučnog tlaka crpke leži ispod 43 dB(A).

HR

F **Niveau de pression acoustique**
Le niveau de pression acoustique du circulateur est inférieur à 43 dB(A).

Nivo zvučnih pritisaka
Nivo zvučnog pritiska pumpe ispod 43 dB(A).

YU

I **Livello di rumorosità**
Il livello di pressione sonora della pompa è inferiore a 43 dB(A).

Nivelul sonor
Nivelul de zgomot al pompei este mai mic de 43 dB(A).

RO

E **Nivel de ruido**
El nivel de ruido de la bomba es inferior a 43 dB(A).

Ниво на шума
Нивото на шум на помпата е под 43 дБ(А).

BG

P **Nível de pressão sonora**
O nível de pressão sonora produzido pelo circulador é inferior a 43 dB(A).

Akustický tlak
Hladina akustického tlaku je pod hranicí 43 dB(A).

CZ

GR **Στάθμη ηχητικής πίεσης**
Η στάθμη ηχητικής πίεσης του κυκλοφορητή είναι χαμηλότερη από 43 dB(A).

Akustický tlak
Hladina akustického tlaku je pod hranicou 43 dB(A).

SK

NL **Geluidsdrukniveau**
Het geluidsdrukniveau van de pomp is lager dan 43 dB(A).

Gürültü seviyesi
Pompanın gürültü seviyesi 43 dB(A)'den azdır.

TR

S **Ljudtrycksnivå**
Pumpens ljudtrycksnivå är mindre än 43 dB(A).

Müratase
Pumba müratase ei ületa 43 dB(A).

EE

SF **Äänenpainetaso**
Pumpun äänenpainetaso on alempi kuin 43 dB(A).

Trokšņu līmenis
Sūkņa trokšņu līmenis nepārsniedz 43 dB(A).

LV

DK **Lydtryksniveau**
Pumpens lydtryksniveau er lavere end 43 dB(A).

Triukšmo lygis
Siurblio keliamas triukšmas neviršija 43 dB(A).

LT

Replacement

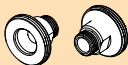
	UP 15 - 14 B		UP 20 - 14 BX	
		BT BU BUT		BXT BXU BXUT
				
PUMPS	L	80	110	
BUDERUS				
BUZ15	80	OK		
BU-Z15A 15C	140	+ 96 43 39 13		
EMB				
NWS 20-6	140	+ 96 43 39 13		
GRUNDFOS				
UP 15-13 B (U)	86	OK		
UP 15-13 BX (U)	130	+ 96 43 39 04		
UP 20-07N, UP 20-15N	150	+ 96 43 39 11	+ 96 43 65 59	
KSB				
R12-1E	140	+ 96 43 39 13		
Riotherm C12/15 (T)	150	+ 96 43 39 11	+ 96 43 65 59	
LOEWE				
C151 (U)	86	OK		
C151 X (U)	130	+ 96 43 39 04		
SPECK				
BN 20/11, 20/22	150	+ 96 43 39 11	+ 96 43 65 59	
VORTEX				
BW(Z) 150, 151 R 1/2"	80	OK		
BW(Z) 152, 153 R 1/2"	80	OK		
BW(Z) 150, 151 V	110		OK	
BW(Z) 152, 153 V	110		OK	

UP 15 - 14 B**Product no. 96 43 39 11**

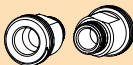
Extension set, Rp 1/2"/G 1 1/4",
length = 35 mm each

**Product no. 96 43 39 12**

Extension set, Rp 1/2"/G 1 1/2",
length = 25 mm each

**Product no. 96 43 39 13**

Extension set, Rp 1/2"/G 1",
length = 30 mm each

**Product no. 96 43 39 04**

Non-return valve 1/2"

**Product no. 96 43 39 05**

Shut-off-valve 1/2"

**UP 20 - 14 BX****Product no. 96 43 65 59**

Extension set, Rp 1/4"/G 1 1/4",
length = 40 mm

**Product no. 96 43 39 07**

Union set, G 1 1/4 x 15 mm
int./ R 1/2" ext.

**Product no. 96 43 39 08**

Union set, G 1 1/4 x Rp 3/4 int.

**Product no. 96 43 39 09**

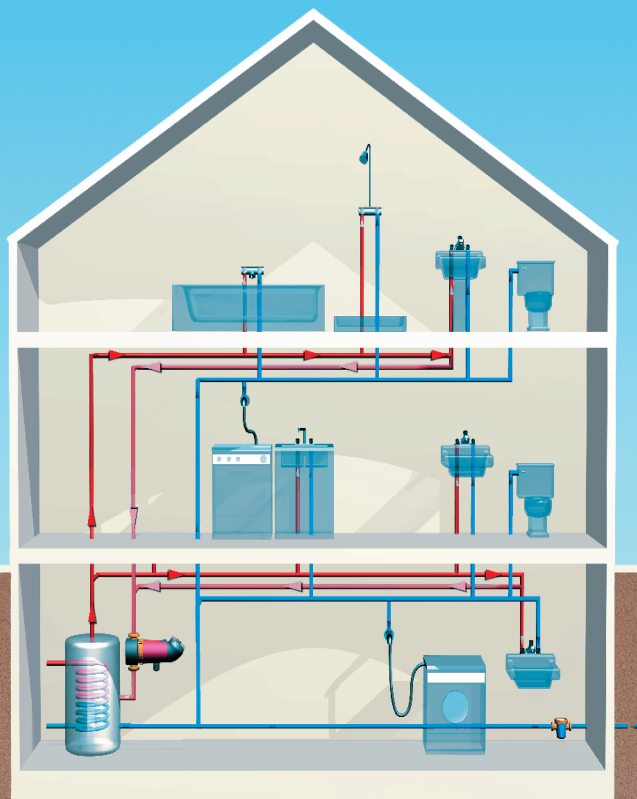
Union set, G 1 1/4 int. x Rp 1/2 / R
3/4 ext.

**Product no. 96 43 39 10**

Union set, G 1 1/4 x 22 mm int.

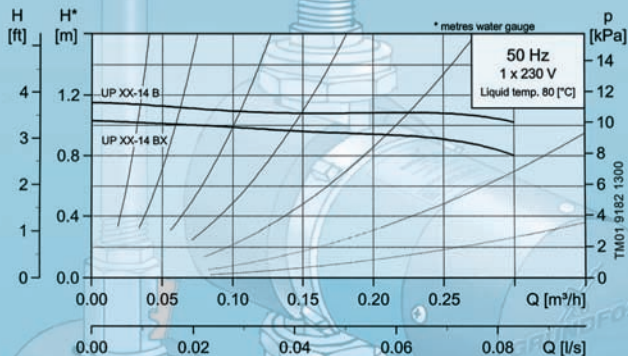


Grundfos Comfort user installation



Only **GB**

Supplementary page for Grundfos Comfort Performance



Recommended applications

Open and closed systems. Domestic hot water systems in single- and two-family houses. Cooling and air-conditioning systems.

Minimum dynamic head for the inlet water:

Liquid temperature	85°C	95°C
Inlet pressure	0.5 m	2.8 m
	0.049 bar	0.27 bar

Maximum system pressure: PN 10, 102 metres water gauge.

The maximum surface temperature will not exceed 125°C.

Do not run the pump without water.