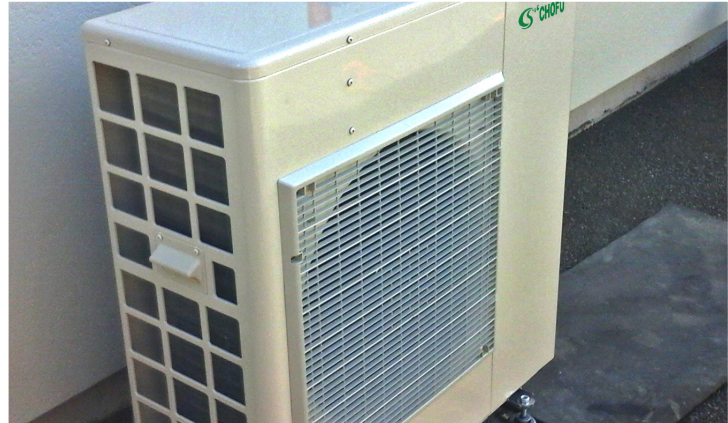


CHOFU

The most efficient, eco-friendly heating available.



Latest heat pump technology

Made in Japan for Central Heating New Zealand, Chofu Air-to-Water heatpumps are ideal for warm water underfloor heating as well as radiators and domestic hot water production. Featuring a remote programmable keypad for control of operation, this heatpump is proven in the NZ environment.




Specification Details

- 5 Year Warranty
- Inverter Compressor
- Super Low Noise - 51 dB(A)
- Max Temp 60°C
- Min Ambient -20°C

MODEL	10 kW	16 kW
TYPE	Heating and Cooling Monobloc Type DC Inverter (Reverse cycle)	
POWER	1N ~ 230V 50Hz	
HEATING (*)		
Capacity [kW]	10.0	16.0
Power Input [kW]	2.30	3.90
Running Current (MAX.) [A]	10.2 (17.5)	17.0 (25.3)
COP	4.35	4.10
COOLING (*)		
Capacity [kW]	8.0	16.0
Power Input [kW]	2.06	4.10
Running Current (MAX.) [A]	9.2(14.5)	17.8 (23.0)
EER	3.45	3.90
MAX. PRESSURE [MPA]	4.1	4.1
REFRIGERANT (R410A) [KG]	1.72	2.99
DIMENSIONS & WEIGHT (NET)		
Height [mm]	882	1,418
Width [mm]	850	1,000
Depth [mm]	330	330
Weight [kg]	74	119

* Specifications are subject to change without notice.

(*) Rating condition Heating: Outdoor temperature DB/WB 7°C/6°C. Leaving water temperature 35°C
 Cooling: Outdoor temperature 35°C. Leaving water temperature 18°C

